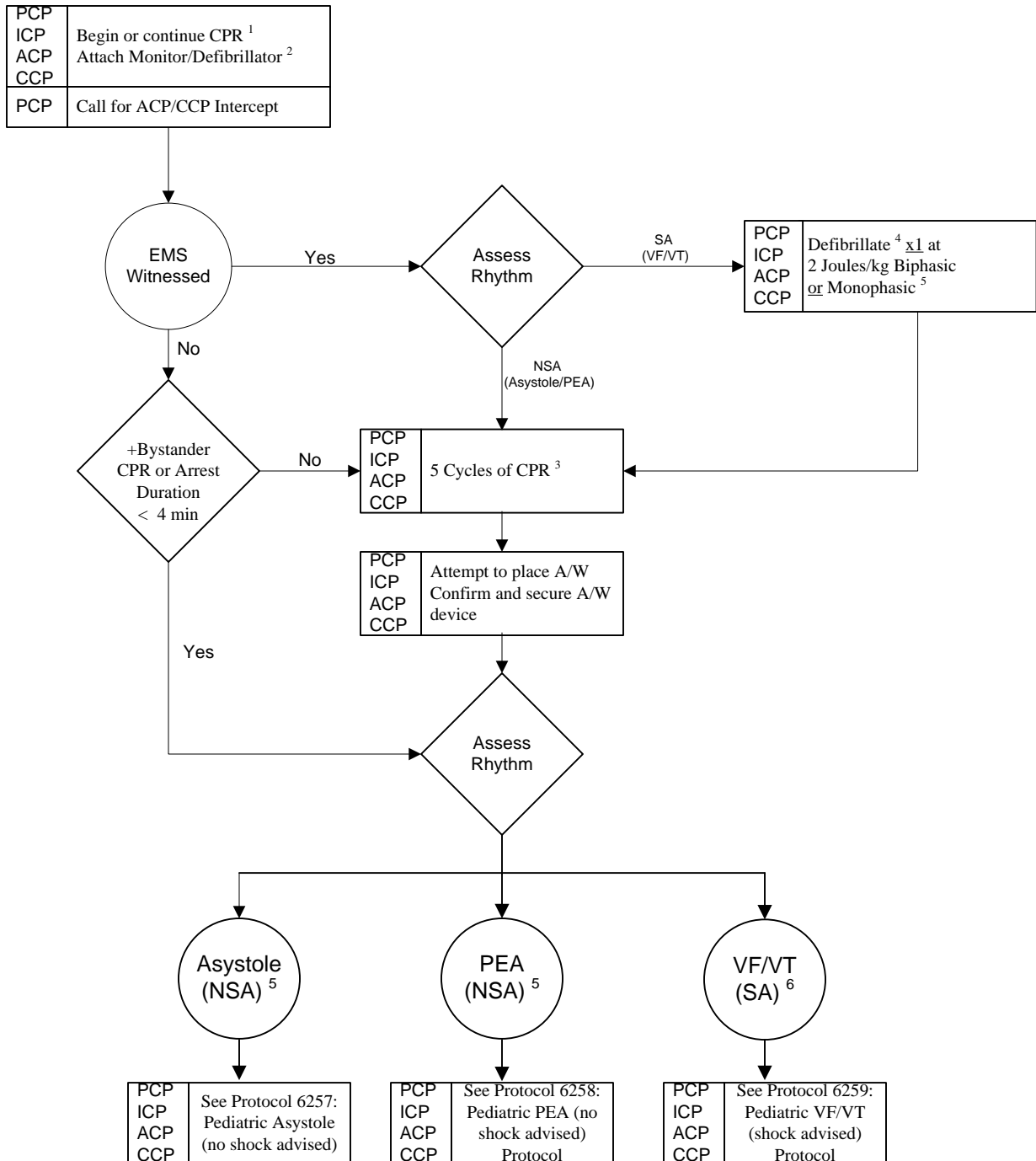


Protocol: Pediatric Cardiac Arrest Overview	PDN: 6256.03	Last Updated: February 7, 2006	Subject: Cardiac Arrest	Page 1
----------------------------------------------------	---------------------	---------------------------------------	--------------------------------	--------



- Emphasis is on minimal interruption of chest compressions. Be aware of possible Foreign Body Airway Obstruction (FBAO).
- PCPs and ICPs – follow Procedure 6641: Semi-Automated External Defibrillation – Pediatric.
ACPs and ICPs – follow either Procedure 6641: Semi-Automated External Defibrillation – Pediatric or Procedure 6633: Manual Defibrillation.
- Each cycle is 15:2 (compressions:ventillations with a compression rate of 100/min). If possible the compressor role should be rotated after each cycle of 5 to prevent compressor fatigue.
- Use 2 Joules/kg for initial defibrillation and 4 Joules/kg for subsequent shocks. If unable to change energy setting, use 200J Biphasic or 360J Monophasic.
- Resume CPR immediately. Only do pulse check if you see organized complexes when you assess the rhythm.
- NSA: No Shock Advised
- SA: Shock Advised